



Quick Sheet Instructions

460250 TURKEY END CONTROL PAN

Overview

The 460250 Turkey Control Pan is intended to be installed at the end of a feed line. Properly installed it will reliably control the feed line auger motor by sensing when feed is present inside the tower. The sensitivity of the switch can be adjusted without any disassembly. Reference the procedure below.

Birds are sensitive to light, temperature, moisture and draught and will avoid places that do not maintain the average environment. Make sure that the control pan area keeps a consistent average temperature, has good ventilation and moisture level. It is advisable to install a small spot light above the control pan and to keep the control pan free of litter and manure to attract birds.

Reference the Turkey Feeding Manual for comprehensive wiring & maintenance instructions.

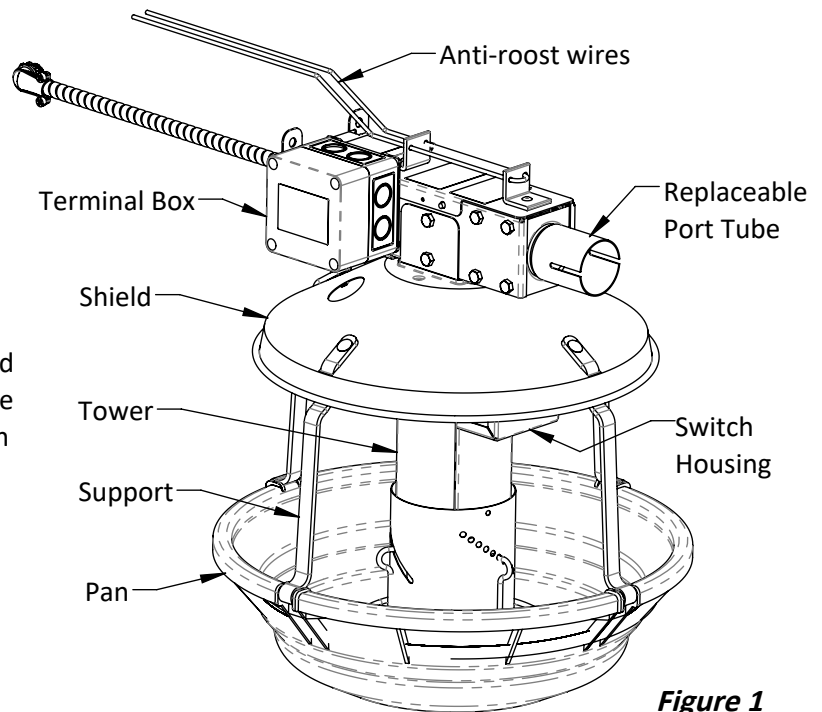


Figure 1

Adjusting Switch Sensitivity:

The Turkey Control Pan has been pre-set from factory to work consistently with many different types of feed. If you find the control pan turns the feed line motor off too soon or not at all, the switch sensitivity can be adjusted with a 5/32" allen wrench. Poke through the decal located on the switch cover as shown in Figure 2. With the allen wrench, turn the screw. Be careful not to turn the screw more than 2 turns in either direction from the pre-set factory setting.

- To make the switch **more** sensitive (will turn the motor off more quickly), turn the screw **clockwise**.
- To make the switch **less** sensitive (will allow the motor to run longer), turn the screw **counter-clockwise**.

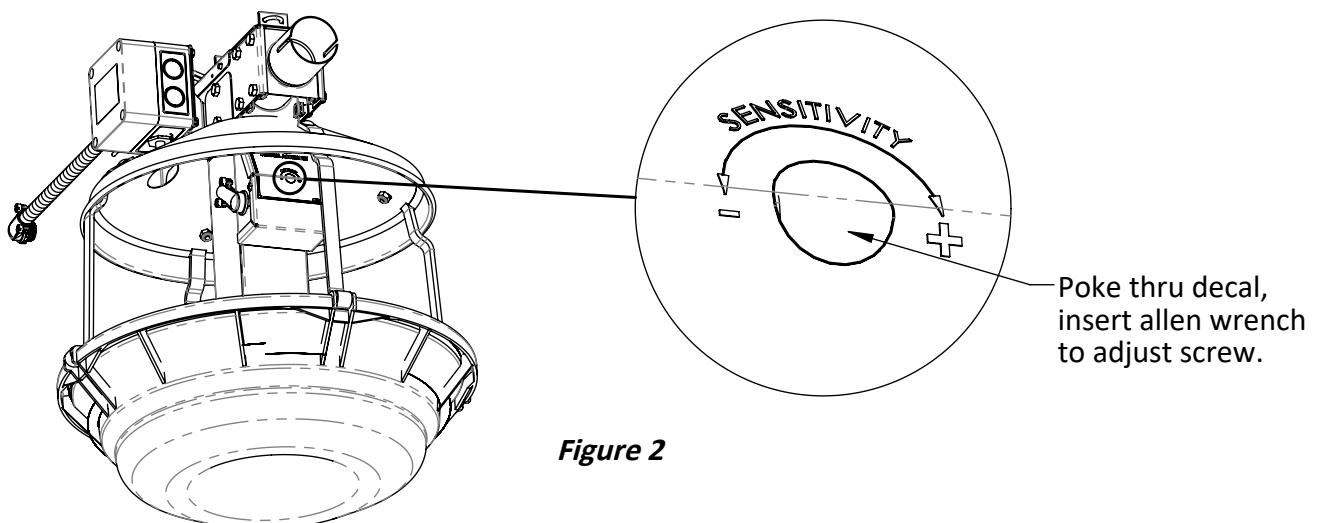
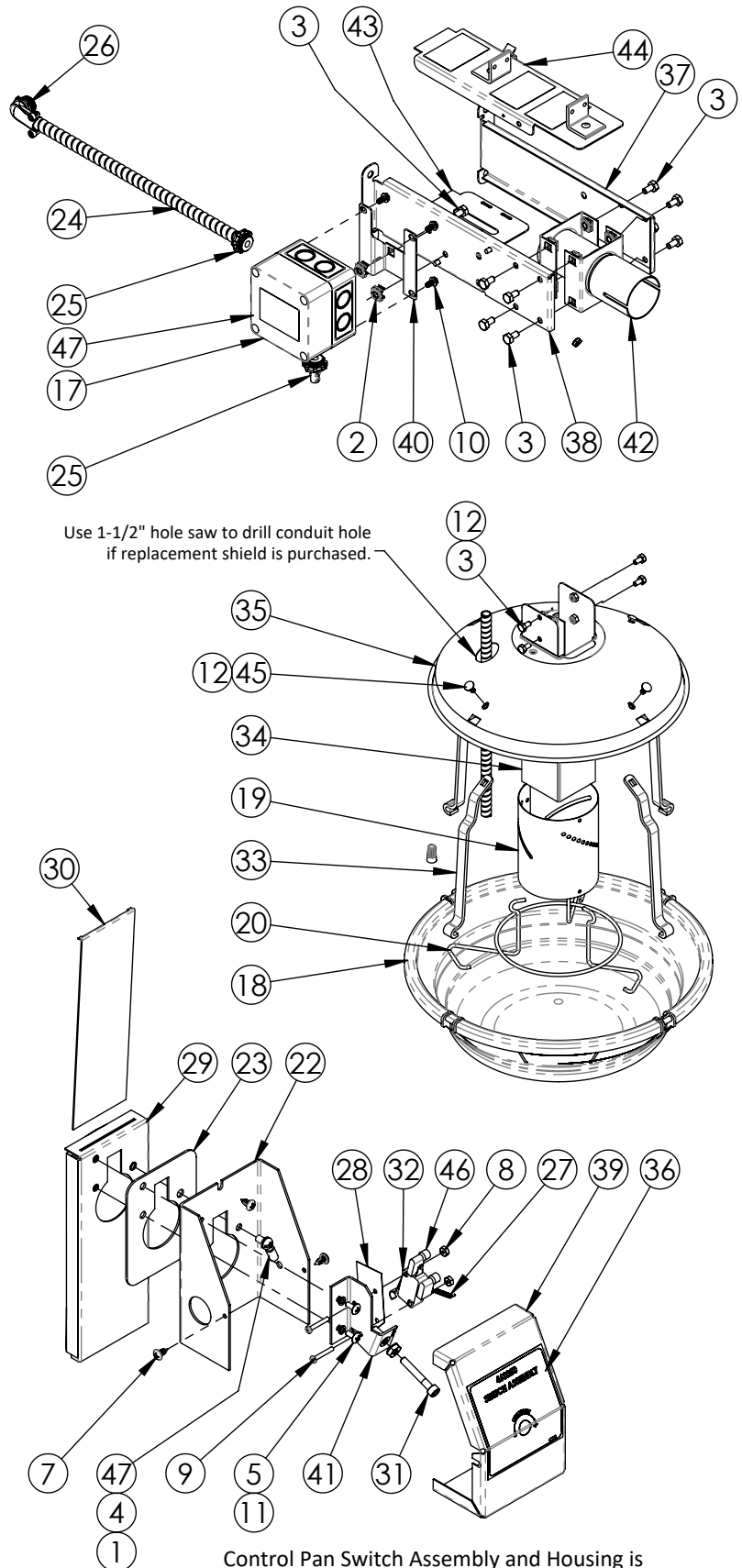


Figure 2

Parts List

460250			
ITEM #	PART #	QTY	DESCRIPTION
1	010312	1	#10 MEDIUM SPLIT LOCKWASHER
2	010503	2	NUT, RETAINER 1/4"-20 ZP
3	010615	14	BOLT, HEX, 1/4-20 X 1/2"
4	011122	1	BOLT, RND, #10-24 X 3/8"
5	012407	2	BOLT, TRUSS, #6-32 X 3/8"
6	012408	1	NUT, HEX, K-LOCK, #10-24
7	012495	3	SCREW, PAN, #8-15 X 3/8"
8	012695	2	NUT, HEX, #4-40
9	012696	2	BOLT, PAN, SLOT, #4-40 X 3/4"
10	012725	4	SCREW, HEX, #12-11 X 1/2"
11	012732	2	WASHER, LOCK, #6
12	012793	8	NUT, HEX, NYLOCK, 1/4-20
13	012902	1	DECAL, DANGER, HIGH VOLTAGE
14	305418	1	YELLOW WIRE NUT
15	450057	1	ANTI-ROOST GUARD WIRE
16	450460	1	ORANGE WIRE NUT
17	450779	1	ELECTRICAL BOX
18	460001	1	PLASTIC TURKEY FEED PAN
19	460005	1	FEED TUBE ASSEMBLY
20	460011	1	FEED LEVEL RING ASSY
21	460041	1	EXTENSION SPRING GUARD
22	460134	1	CONTROL PAN SWITCH BASE
23	460135	1	BASE SPACER
24	460154	2.34	3/8 FLEXIBLE METAL CONDUIT
25	460155	2	3/8 SCREW-IN CONDUIT CONNECT
26	460156	2	3/8 X 90 DEG CONDUIT CONNECT
27	460158	1	1/8 X .016 X 1/2 EXT SPRING
28	460160	1	PLASTIC INSULATOR
29	460194	1	PIVOT PLATE ASSEMBLY
30	460195	1	FEED PLATE
31	460196	1	SCREW, SOCKET, #10-24, 1-1/4"
32	460199	1	MICRO SWITCH
33	460213	4	FEED PAN SUPPORT - ZINC PLATED
34	460221	1	DROP TUBE WELDMENT
35	460222	1	FEED PAN SHIELD
36	460233	1	460250 SWITCH ADJUSTMENT LABEL
37	460247	1	LEFT CONTROL PAN HOUSING
38	460249	1	RIGHT CONTROL PAN HOUSING
39	460258	1	SWITCH COVER
40	460259	1	ENCLOSURE BRACKET
41	460260	1	SWITCH BRACKET
42	460264	1	PORT TUBE ASSEMBLY
43	460267	1	LOWER COVER
44	*460269	1	TOP COVER, TURKEY CONTROL PAN
45	690004	4	SCREW, 1/4-20 X 5/8 CRG SN ZP
46	713511	2	FEMALE FLAG DISCONNECT
47	730058	1	#16-14 RING TERMINAL
48	SPE-000-1039	4.33	WIRE, 14AWG, STRANDED, BLACK
49	SPE-000-1040	1.5	WIRE, 14 AWG, STRANDED, WHITE
50	SPE-000-1045	3	WIRE, 14AWG, STRANDED, GREEN

* Need 420267 if older than 2024.



Control Pan Switch Assembly and Housing is available as a stand-alone assembly, PN 460244

North America:

Phone: 800.99VALCO (800.998.2526)
 Fax: 419.678.2200
 Email: sales@val-co.com

990211 [B] 10/30/24
 Page 2

International:

Phone: (+1) 419.678.8731
 Fax: (+1) 419.678.2200
 Email: intl.sales@val-co.com