



Quick Sheet Instructions

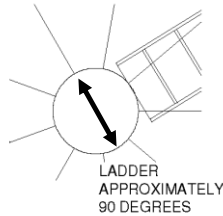
U:\MANUALS\990000\990008
JDS REV. (4) 6-3-2011

500650 – WAYBACK LID

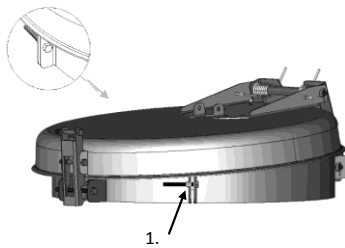
Lid Installation

The Bin Lid comes pre-assembled; you will need to determine the direction that you prefer to place the bin opening. Then follow the directions (below) for details on how to mount the Lid with Lid Locking Collar (Clamp Band) to the existing Lid Collar on the bin roof and how to install the rope for opening and closing the bin lid.

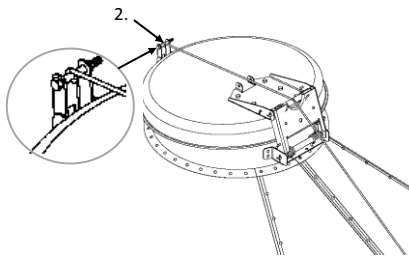
Recommend – Placement of Lid latch and hinge at a 90 degree angle to ladder for easy access.



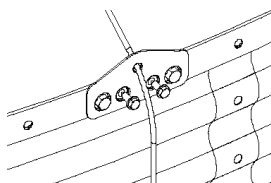
1. Slide the Lid assembly into the desired position and tighten the 5/16" x 2 1/2" Bolt located thru the holes of the Lid Locking Collar. (As pictured below)



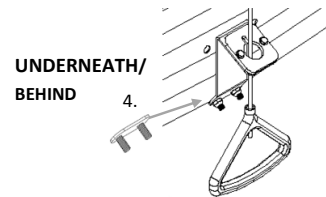
2. Wrap end of the Cord around the bolt and tie securely. KNOT MUST BE TIGHT TO SECURE CORD. (as pictured below)



3. Guide the Cord over the bin roof (as pictured above) and use the Self-Drilling Screws to attach the Cord Retainer to the edge of the bin roof (as pictured below). 2 large holes on the Cord Retainer are provided to allow the bin bolts to pass through. (as pictured below)

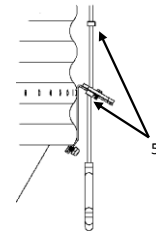


4. Attach the Cord Containment Bracket to the bottom edge of the bin. Place the Cord Containment Clamp on the underneath/behind the edge of the bin then tighten nuts sufficiently to hold Cord Containment Clamp securely in place. Now feed the Cord through the hole in the Cord Containment Bracket.

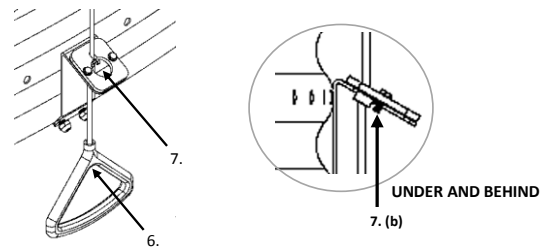


HANDLE GOES ON LAST

5. Slip 2 Cord Locking Collars onto the Cord. To locate the proper placement, open the lid completely and adjust the Cord Locking Collar to fit tight under the Cord Containment Bracket. Then Close the lid and place the second Cord Locking Collar tight under the Cord Containment Bracket.



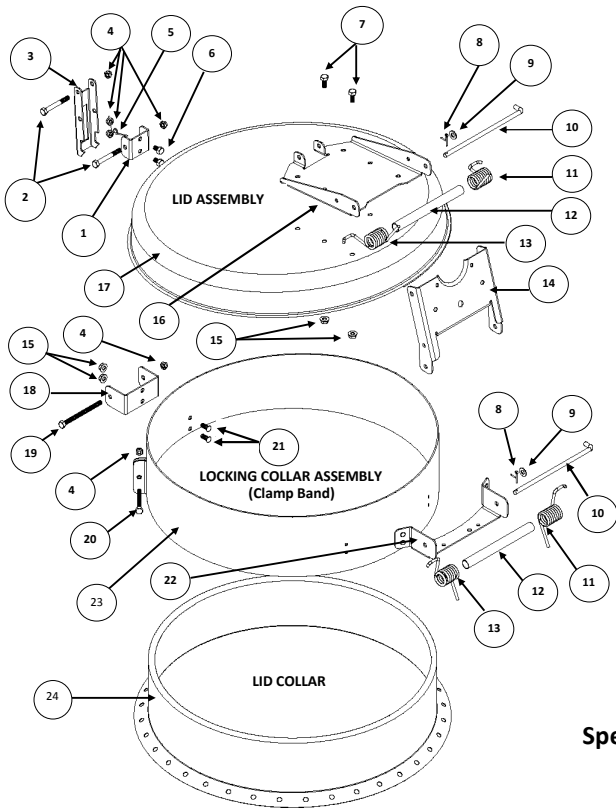
6. Slip the handle over the end of the Cord and tie a knot in the Cord, at the desired length.



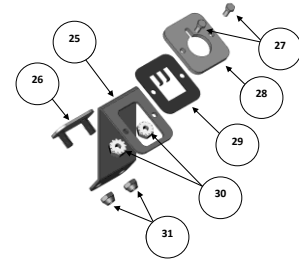
7. To open Lid, pull Cord down through the bracket until the top Cord Locking Collar is under the bracket and let the Cord slide back and up into the slot to lock in place. Do not release the Cord handle until the Cord is locked in place.

8. To close the Lid, pull down on the Cord to release the Cord Locking Collar and slowly let the Cord slide up through the bracket until lid is closed and let Cord slide back and up into the slot to lock in place.

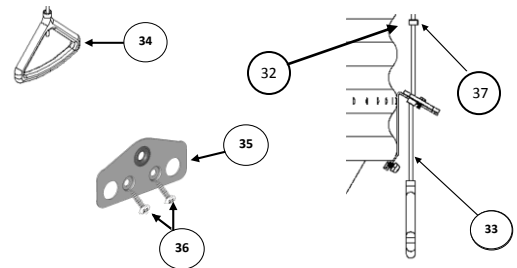
Pre-Assembled Parts: 500650



Pre-Assembled Parts: 500679



Un-Assembled Parts



Special Order – replacement parts

Key #	PART #	Description	Qty
500650 – WayBack Lid Assembly (Pre-Assembled)			
1	500659	Lid Locking Bracket	1
2	010652	5/16" X 2-1/2" Hex Bolt	2
3	500660	Unlocking Arm	1
4	012789	5/16" Locknut	6
5	500662	Locking Spring	1
6	010640	5/16" X 1/2" Hex Bolt	2
7	010643	5/16" X 3/4" Hex Bolts	6
8	012660	Cotter Pin	2
9	010426	5/16" Washer	2
10	500685	Hinge Rod	2
11	500482	Right Hand Spring	2
12	500658	Spring Spacer	2
13	500492	Left Hand Spring	2
14	500654	Collar – Hinge Bracket	1
15	501441	5/16" Flange Nut	8
16	500655	Top Hinge Bracket	1
17	500686	Bin Lid	1
18	500661	Collar Lock Bracket	1
19	010655	5/16" X 4" Bolt	1

Key #	PART #	Description	Qty
20	010651	5/16" X 2-1/2" Bolt	1
21	012780	5/16" X 3/4" Thread Stud	2
22	500653	Bottom Hinge Bracket	1
23	500652	Lid Locking Collar	1
24	X sizes	Lid Collar (not included in kit)	0
500679 - Cord Containment Bracket (Pre-Assembled)			
25	500665	Cord Containment Bracket	1
26	500671	Cord Containment Clamp	1
27	012795	#10-24 X 1/2" Un-Slotted Hex Screw	2
28	500664	Plastic Cord Guide	1
29	500691	Cord Retainer	1
30	012408	#10-24 Kep Locknut	2
31	012789	5/16"-18 NYLOCK nut	2
32	500669	Cord Locking Collar	2
33	500668	Cord	32.5'
34	500666	Cord Handle	1
35	500688	Rope Retainer	1
36	012425	1/4" X 3/4" Self Drilling Screws	2
37	010310	#10 – 32 x 1/4" Slotted Nylon Set Screw	2

North America:

Phone: 800.99VALCO (800.998.2526)
 Fax: 419.678.2200
 Email: sales@val-co.com



International:

Phone: (+1) 419.678.8731
 Fax: (+1) 419.678.2200
 Email: intl.sales@val-co.com