

# Quick Sheet Instructions

## Tru-Lok Lid Add - On Lid Opener

### Installation

The Tru-Lok lid and extension tubes require some assembly as explained in the steps below.

1. Rotate lid opener so that bottom bracket is centered over the roof deck seam that aligns with the leg to be used for the lid tube. Tighten bolt on lid locking collar securely. If the lid opener has a latch on the front, remove it to enable the tru-lok kit to function.
2. Unfasten 5/16 x 3 bolt and two closest #010643 5/16 x 3/4 bolts (four for the 40Deg Roof) on the #500655 lid bracket. Assemble left top plate and right top plate to it, reusing the hardware. Tighten bolts securely.
3. Fasten roof deck tube between top holes in both lid hinge plates with #010649 5/16" x 1-3/4" hex bolt and locknut. Do not overtighten bolt, tube must move freely.
4. Assemble #500709 pivot plate bracket to #500710 back-up plate with #010643 5/16" x 3/4" bolt and locknut thru bottom holes as shown above. To assemble pivot plate to bin remove (3) bin bolts from holes in roof deck & hopper seam in line with roof deck seam aligned with lid hinge bracket. Re-use bin bolts to attach bracket to bin.
5. Assemble side marked "TOP" of (2) #500704 pivot plates to end of roof deck tube with #010649 5/16" x 1-3/4" bolt and locknut. Assemble bottom side of pivot plates to the pivot plate bracket with (2) #010643 bolts and locknuts. Bolt heads go on inside of plates. Refer to drawing. Do not overtighten bolts, pivot plates need to move freely.
6. Fasten top #500729 tube extensions to pivot plates with (1) #010649 bolt and locknut per tube. Use same hardware to fasten additional extension tubes and #500226 basic tube. Tubes can be assembled as bin is built.
7. Place #500257 pinch handle assembly on bin leg approximately 40" from bottom of bin and fasten with (2) #500719 clips and (2) #010649 bolts and locknuts.

*Exact height can be adjusted for your comfort after bin is erect.*

8. Slide #500230 tube handle over bottom of tube and place tube thru pinch handle. Close lid and secure handle approximately 40" above pinch handle with #011434 1/4" x 1" carriage bolt and #010943 wing nut.
9. Wet inside of rubber handle grip and slide over handle.

Figure 1

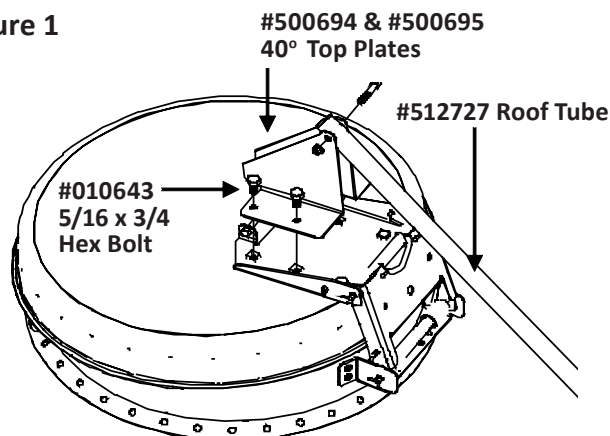


Figure 2 Attach pivot plate brackets below roof deck seam aligned with lid hinge on opener.

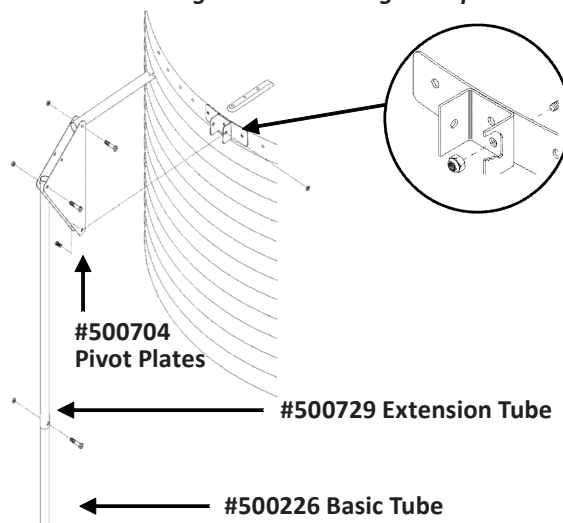
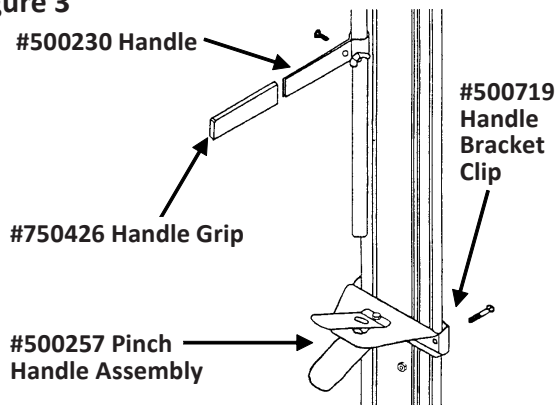
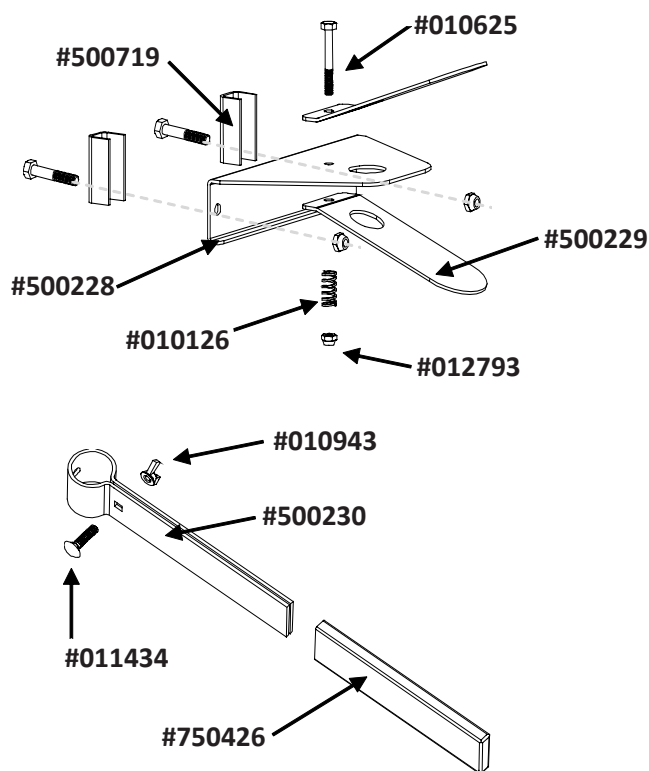
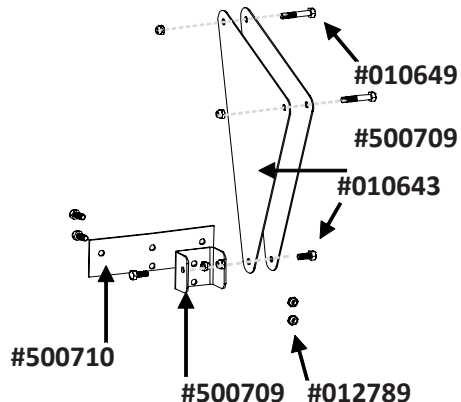
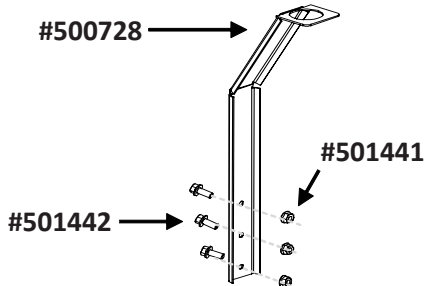
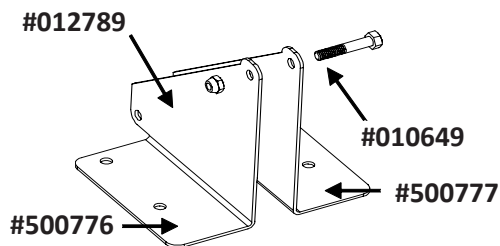


Figure 3



○	Roof Tube (length by bin size 6, 7, 9 or 12 ft)	○
○	#500729 Extension Tube (one (1) belled end)	○
○	#500226 Basic Tube	○
○	#500763 Extension Coupler (two (2) belled ends)	○



PART #	DESCRIPTION	QTY
<b>Tru-Lok Add-On</b>		
500775	Tru-Lok Accessory Carton	1
506725	Tru-Lok 40° Roof Tube - 6' (1 per bin size)	1
507727	Tru-Lok 40° Roof Tube - 7' (1 per bin size)	1
509727	Tru-Lok 40° Roof Tube - 9' (1 per bin size)	1
512727	Tru-Lok 40° Roof Tube -12' (1 per bin size)	1
500226	Tru-Lok Basic Tube (as per bin size)	1-3
500729	Tru-Lok Extension Tube (1 end belled)	0-6
500728	Tru-Lok Tube Guide (3-7 Ring only)	1
500763	34"Extension Coupler Tube (2 ends belled)	0-2
<b>REPLACEMENT PARTS (quantities will vary)</b>		
500777	Right Top Plate	-
500776	Left Top Plate	-
500704	Pivot Plates	-
500709	Pivot Plate Bracket	-
500710	Backup Plate	-
500257	Pinch Handle Assembly	-
500229	Pinch Opener Handle	-
500228	Pinch Opener Mtg Bracket	-
010126	1/2" Medium Load Spring	-
500719	Handle Bracket Clip	-
010625	1/4-20 x 2 Hex Bolt	-
012793	1/4-20 Nylock Nut	-
500230	Handle	-
750426	Hand Grip	-
010643	5/16-18 x 3/4" Hex Bolt	-
011434	1/4-20 x 1 Carriage Bolt	-
010943	1/4-20 Wing Nut	-
010649	5/16" Hex Bolt	-
012789	5/16" Locknut	-
501442	5/16" x 1" Flanged Hex Bin Bolt	-
501441	5/16" Flange Nut	-

6 FT BIN - TUBE USAGE CHART					9 FT BIN - TUBE USAGE CHART				
Tube #	Roof Tube	Basic Tube	Ext. Tube	Ext Coupler	Tube #	Roof Tube	Basic Tube	Ext. Tube	Ext Coupler
1 RING	1	1	0	0	1 RING	1	1	1	0
2 RING	1	1	1	0	2 RING	1	1	2	0
3 RING	1	2	2	0	3 RING	1	1	3	1
4 RING	1	2	3	0	4 RING	1	1	4	1
					5 RING	1	1	5	1
					6 RING	1	1	6	1
7 FT BIN - TUBE USAGE CHART					12 FT BIN - TUBE USAGE CHART				
Tube #	Roof Tube	Basic Tube	Ext. Tube	Ext Coupler	Tube #	Roof Tube	Basic Tube	Ext. Tube	Ext Coupler
1 RING	1	1	1	0	1 RING	1	1	2	0
2 RING	1	1	2	0	2 RING	1	1	3	0
3 RING	1	1	3	0	3 RING	1	2	0	1
4 RING	1	1	4	0	4 RING	1	2	1	1
5 RING	1	1	5	0	5 RING	1	2	2	1
6 RING	1	1	6	0	6 RING	1	2	3	1
					7 RING	1	3	0	2

#### North America:

Phone: 800.99VALCO (800.998.2526)

Fax: 419.678.2200

Email: [sales@val-co.com](mailto:sales@val-co.com)

U:\MANUALS\990000\990033

JDS 1/16/2012 REV (1)

#### International:

Phone: (+1) 419.678.8731

Fax: (+1) 419.678.2200

Email: [intl.sales@val-co.com](mailto:intl.sales@val-co.com)