

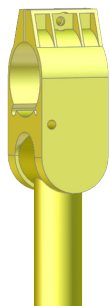


# Quick Sheet Instructions

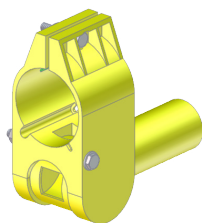
## Best Start II Chick Feeder (820005) Optional Standard Extension (820006) and Optional Crown (820007)



**BASIC CHICK FEEDER WITH EXTENSION**



**BASIC CHICK FEEDER**



**BASIC CHICK FEEDER - SHUT OFF**

### Overview

The Best Start II Chick Feeder is comprised of the basic feeder and optional extension sleeve. The feeder and extension sleeve feature rugged, non-corrosive polymer construction. The fold away shut off design minimizes the chance of breakage by catch crews and winching systems. The feeder comes pre-assembled for installer convenience and fits any style of feeder tube. To the right is shown the basic chick feeder with optional Crown extension 820007.



**BASIC CHICK FEEDER WITH CROWN**

### Installation

- Slide the Basic Chick Feeders onto the feed tube, as shown in Figure 1, then insert the 1" Hex Bolt into the top hole of the Basic Feeder (above the feed tube) and tighten with one of the Nylock Nuts. Then insert the 2-1/4" Hex Bolt into the bottom hole of the Basic Feeder (below the feed tube) and tighten with the Nylock Nut **OR** spread the top of the Basic Feeder apart just far enough to snap over the feed tube, as shown in Figure 2 and tighten into place over the holes provided at the bottom side of the feed tubes.
- Slide the **Optional** Standard Extension or the **Optional** Crown Extension, as far a possible, onto the end of the tapered Basic Feeder extension.
- Place the Rubber Washer on the top side of the feed tube and just under the top of the Basic Feeder where it splits, (may be centered or off center).

Figure 1

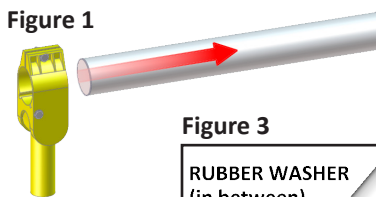


Figure 3

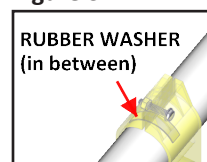
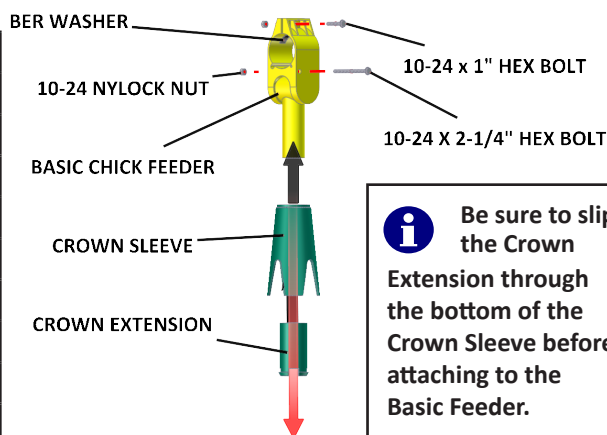
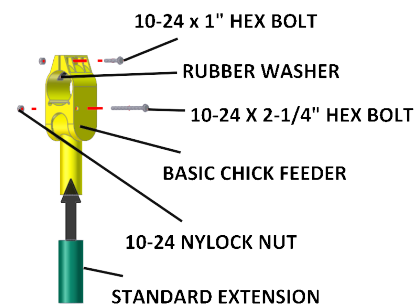
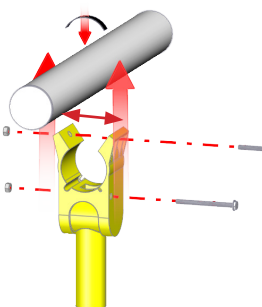


Figure 2



**i** Be sure to slip the Crown Extension through the bottom of the Crown Sleeve before attaching to the Basic Feeder.

| PART #   | DESCRIPTION                                       | QTY |
|--|---|-----|
| 820005   | BEST START II CHICK FEEDER                        | 1   |
| 820006   | BEST START II CHICK FEEDER - OPTIONAL STAND. EXT. | 1   |
| 820007   | BEST START II CHICK FEEDER - OPTIONAL CROWN       | 1   |
| <b>All the above are shipped in quantities of 50 per box</b> |   |     |
| <b>HARDWARE and WASHER (Included)</b>                        |   |     |
| NO #   | 10-24 x 1" Hex Bolt                               | 50  |
| NO #   | 10-24 x 2-1/4" Hex Bolt                           | 50  |
| NO #   | 10-24 Nylock Nut                                  | 100 |
| NO #   | RUBBER WASHER                                     | 50  |

### North America:

Phone: 800.99VALCO (800.998.2526)  
Fax: 419.678.2200  
Email: [sales@val-co.com](mailto:sales@val-co.com)

U:\MANUALS\990000\990043  
JDS 01-20-2012

### International:

Phone: (+1) 419.678.8731  
Fax: (+1) 419.678.2200  
Email: [intl.sales@val-co.com](mailto:intl.sales@val-co.com)