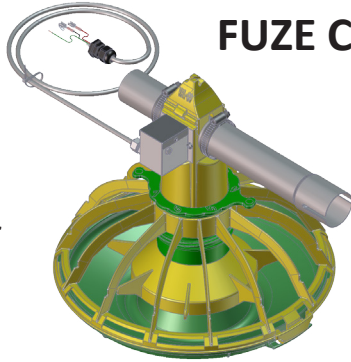




# Quick Sheet Instructions

## FUZE CONTROL PAN W/MECHANICAL SWITCH 820037, 8230038, 820039, 820040, 820041, 820042, 820043

The Control Pan with Mechanical Switch is pre-assembled and **MUST** be mounted **VERTICALLY** and with the Mechanical Switch located on the proper side of the broiler tube, as shown in **OVERVIEW**



### OVERVIEW

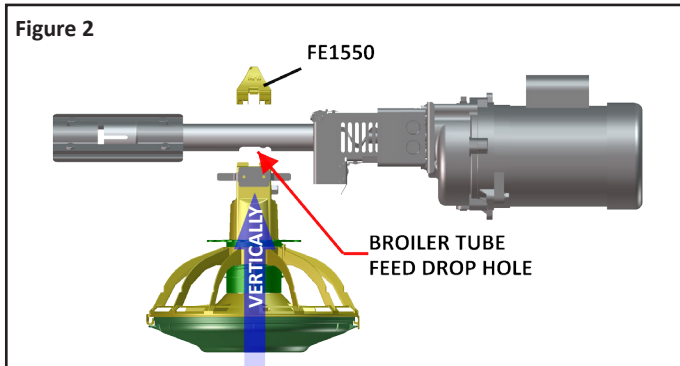


**WARNING!**  
**DISCONNECT POWER BEFORE INSTALLING OR SERVICING THIS EQUIPMENT!**

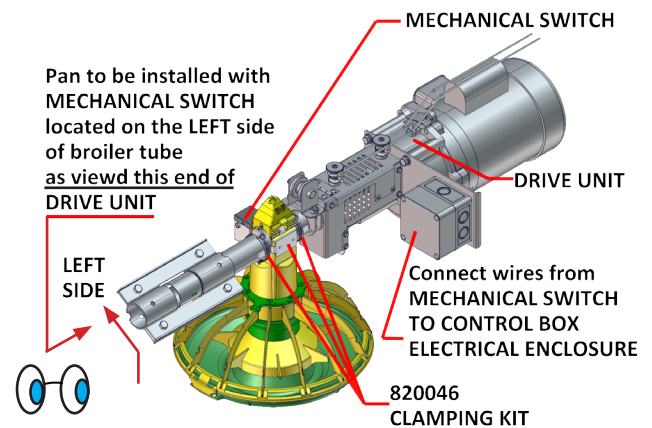
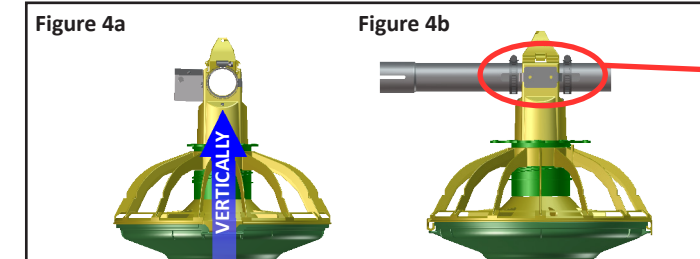
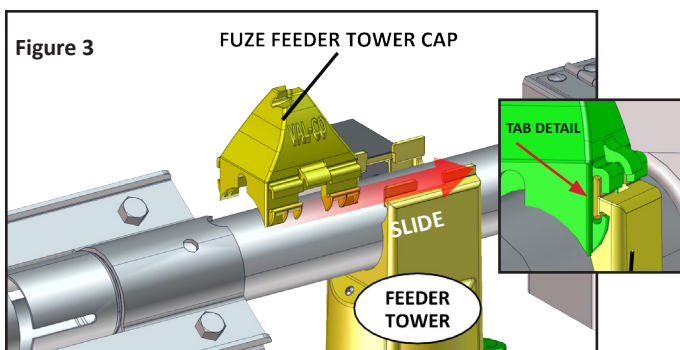
Figure 1 Shown as END-OF-LINE...Installed.  
Can be used in MID-LINE installations.

### Installation Instructions

1. Remove the FE1550 Feeder Tower Cap from assembly by sliding it off. (If pre-assembled to the Control Pan.)
2. Lift the Control Pan onto the bottom of the Port Tube centered under the Feed Drop Hole, as shown in Figure 2.



3. Slide the FE1550 Feeder Tower Cap onto the Feeder Tower tabs, as shown in Figure 3.

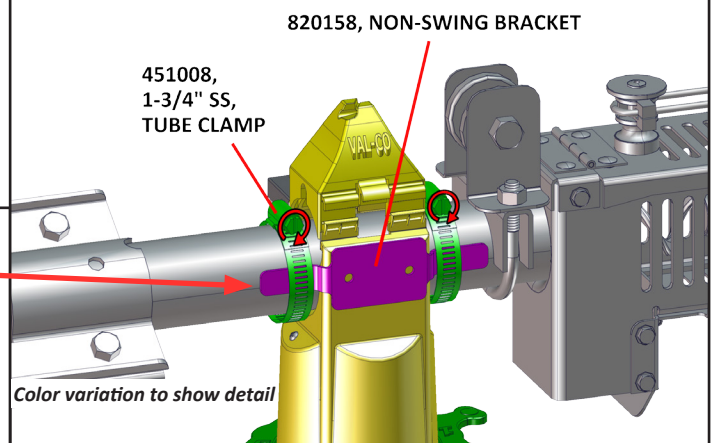


4. Fasten the (2) 451008 Tube Clamps onto the Port Tube, one on each side of the Control Pan, as shown in Figure 4.
5. Connect Mechanical Switch wiring. Refer to next 2 pages.



**TIGHTEN THE 451008 TUBE CLAMPS OVER THE 820158 NON-SWING BRACKET TABS, AS CLOSE TO THE CONTROL PAN AS POSSIBLE.**

Figure 4 BRACKET AND CLAMPS ARE PART OF CLAMPING KIT 820046

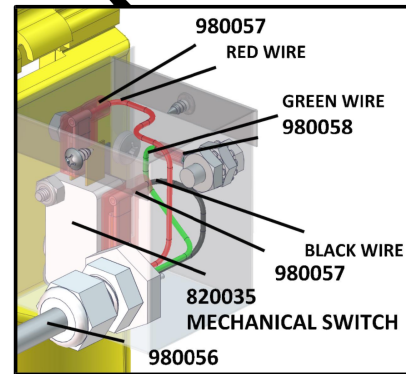
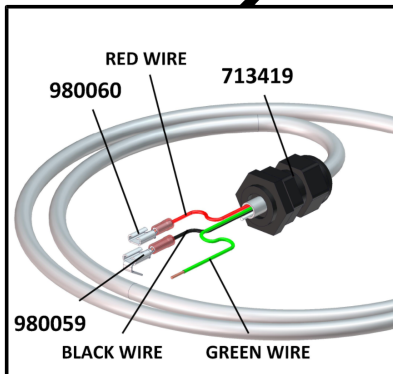


# Wiring



**WARNING!**  
DISCONNECT POWER  
BEFORE SERVICING!

SEE WIRING DIAGRAMS  
ON NEXT PAGE FOR CONNECTIONS

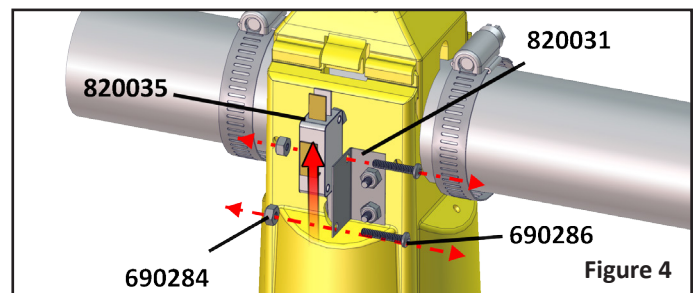
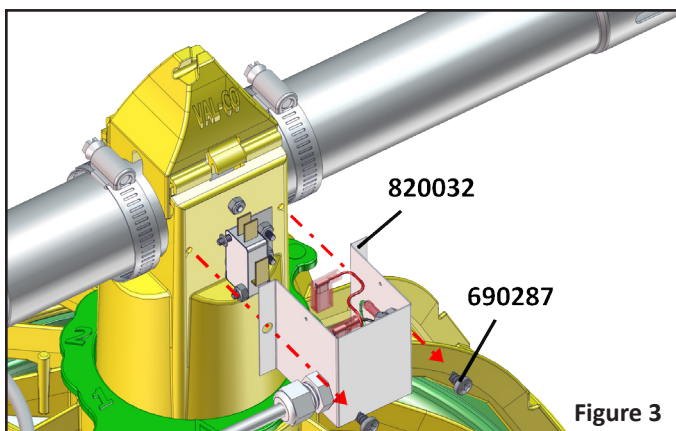
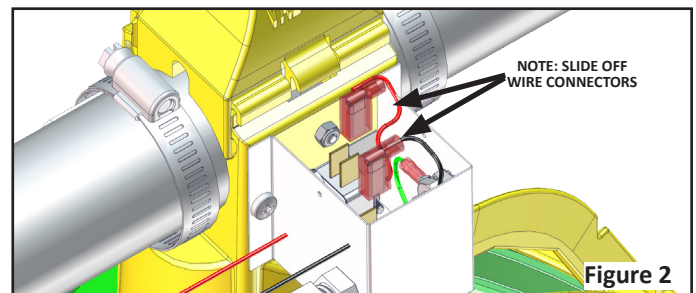
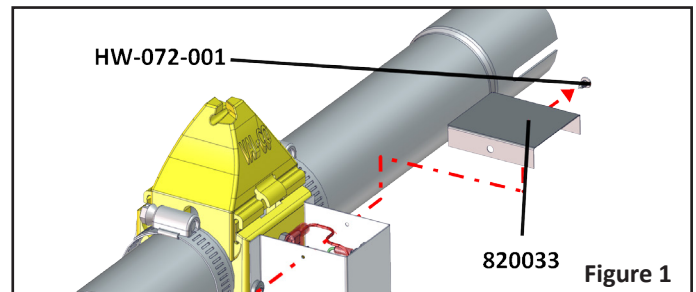


PART #	DESCRIPTION - SUB ASSEMBLY	QTY
<b>980061 WIRING ASSEMBLY, FUZE CONTROL PAN, MECH SWITCH</b>		
713419	CORD GROMMET	1
980056	CABLE, 18/4 ALPHA, RC-18AWG, PVC JACKET, 300V, .240D	3
980057	CONNECTOR, ELECT, FLAG, FEM, .187X.020, 22-18, FULLY INSULATED	2
980058	CONNECTOR, ELECT, RING, 22-18, #10 INSULATED	1
980059	CONNECTOR, ELECT, PIGGYBACK, 22-18, .250 X .032 TAB, INSULATED	1
980060	CONNECTOR, ELECT, FEM, 250X.03 22-18, INSULATED	1


## Mechanical Switch Replacement

1. Remove Enclosure Cover (*lid*), as shown in Figure 1.
2. Detach wires from the switch, as shown in Figure 2.
3. Remove 820032 Enclosure out of the way, as shown in Figure 3.
4. Remove the "old" Mechanical Switch from the 820031 Bracket.

*To replace with NEW switch reverse the order.*

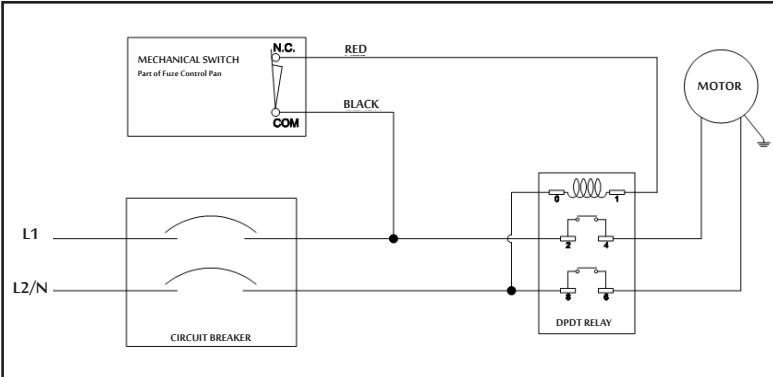



# Wiring Diagrams



**WIRING MUST BE DONE BY A LICENSED ELECTRICIAN.  
ALL LOCAL CODES MUST BE FOLLOWED!**

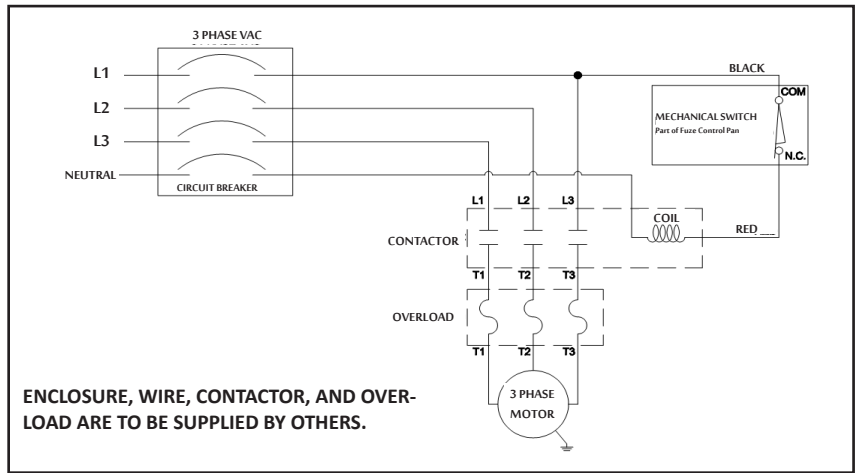
## SINGLE PHASE / END CONTROL





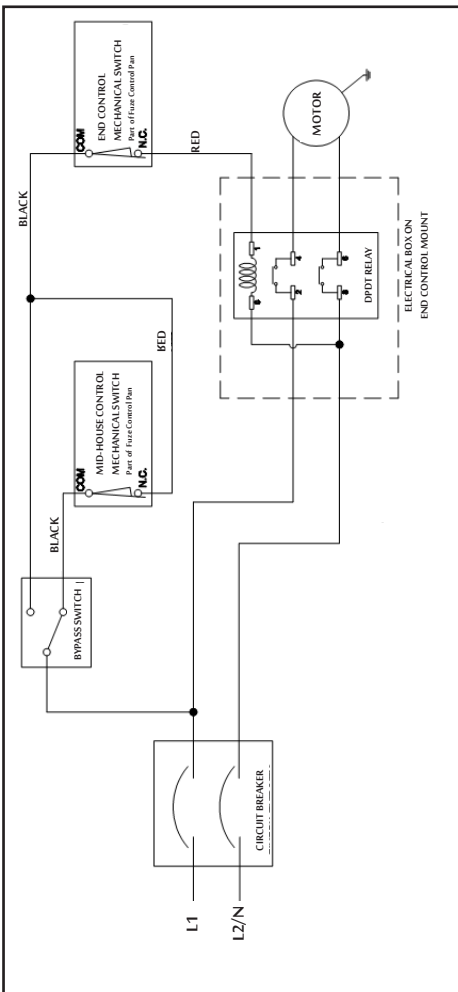
**RELAYS/COILS MUST BE INTEGRATED AS SHOWN. MECHANICAL SWITCH NOT TO DIRECTLY SWITCH MOTOR LOAD.**

## THREE (3) PHASE / END CONTROL

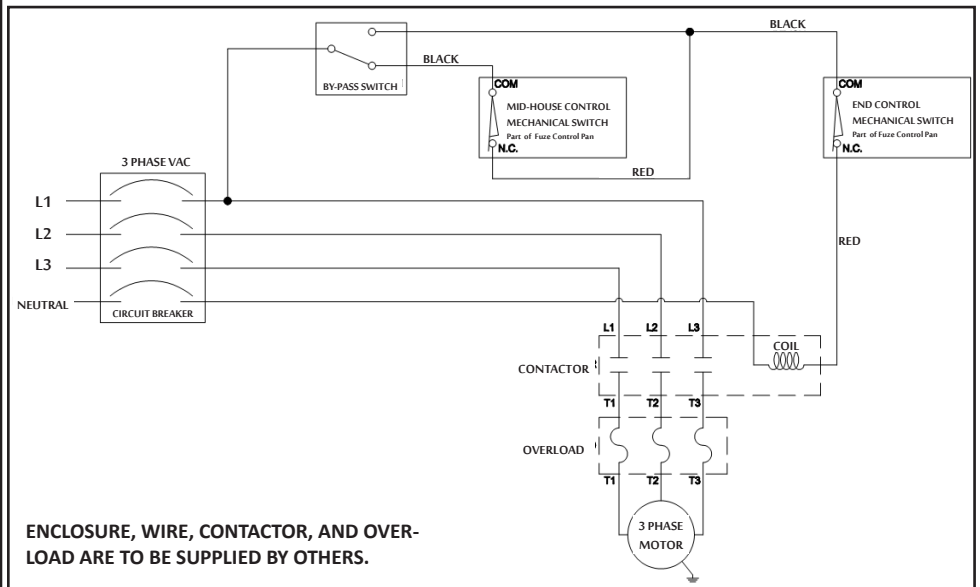


ENCLOSURE, WIRE, CONTACTOR, AND OVERLOAD ARE TO BE SUPPLIED BY OTHERS.

## SINGLE PHASE / MID-HOUSE CONTROL

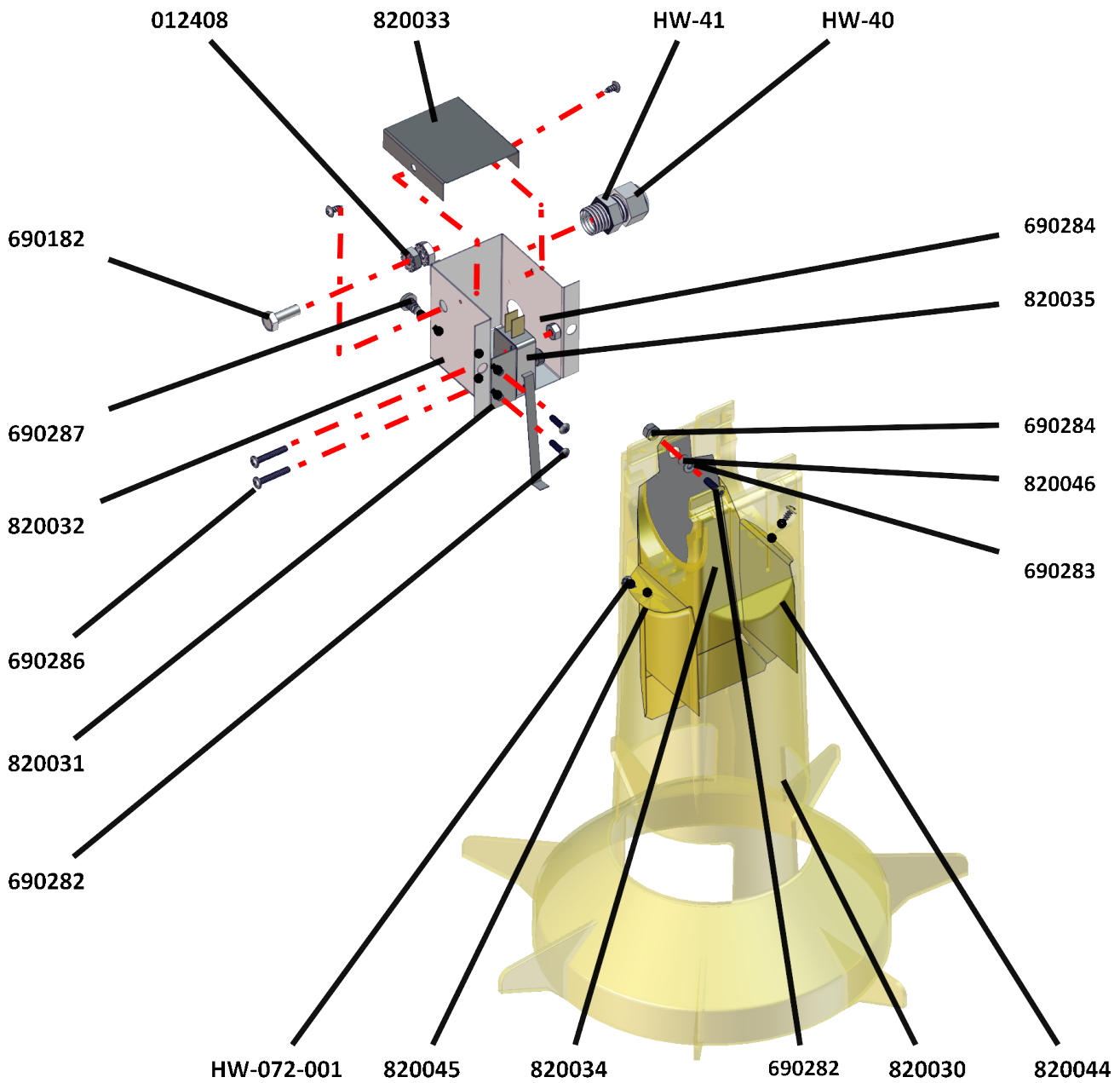


## THREE (3) PHASE / MID-HOUSE CONTROL



ENCLOSURE, WIRE, CONTACTOR, AND OVERLOAD ARE TO BE SUPPLIED BY OTHERS.

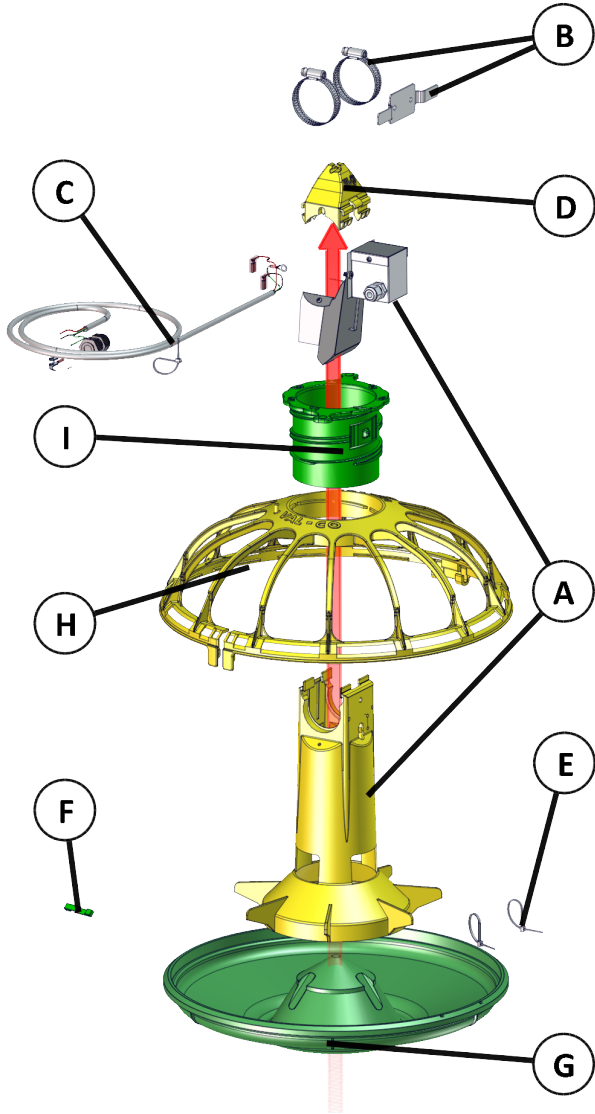
# 820029 Mechanical Switch Components Exploded



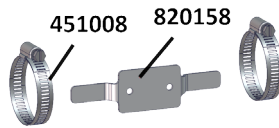
PART #	DESCRIPTION - SUB ASSEMBLY	QTY
<b>820029 FUZE FEEDER, MECH SWITCH COMPONENTS</b>		
012408	#10-24 HEX KEP LOCKNUT	2
690182	SCREW, 10-24 X 1/2 HHCS ZP	1
690282	SCREW, SKT HD BUTTON 4-40 X 3/8 ZP	3
690283	WASHER, FLAT #4 ZP	1
690284	NUT, HEX LOCK 4-40, NYLOC, ZP	5
690286	SCREW, 4-40 X 5/8", PPHMS ZP	2
690287	SCREW, #8-16 X 1/4", PPHTRS ZP SELF TAPPING	2
690288	SPACER, 3/16OD X .115 ID X 3/16 ZP	1
820030	MODIFIED FUZE TOWER, CNTL PAN MECH SWITCH	1
820031	BRKT, MECH SWITCH, FUZE CNTL PAN	1

PART #	DESCRIPTION - SUB ASSEMBLY	QTY
<b>820029 - Continued</b>		
820032	ENCLOSURE ,MECH SWITCH, FUZE CNTL PAN	1
820033	COVER, ENCL, MECH SWITCH, FUZE CNTL PAN	1
820034	PADDLE, MECH SWITCH, FUZE CNTL PAN	1
820035	MODIFIED MECH SWITCH, FUZE CNTL PAN	1
820044	SHIELD ,FUZE CONTROL PAN	1
820045	SHIELD ,FUZE CONTROL PAN, OPP HAND	1
HW-072-001	SCREW - PPHSMS #4 X .25 ZINC	4
HW-40	STRAIN RELIEF CABLE DOME PG7	1
HW-41	LOCKING NUT CABLE FTG PG7-GY	1

## Control Pan Assembly (example for all models)



PART #	DESCRIPTION - CONTROL PANS	QTY
<b>Interchangeable Components (all Mech. Switch models)</b>		
A	820029 KIT, FUZE FEEDER, MECH SWITCH	1
B	820046 KIT, FUZE CTRL PAN, CLAMPING W/MECH SWITCH	1
C	980061 WIRING ASSY, FUZE CNTL PAN, MECH SWITCH	1
D	FE1550 FUZE FEEDER TOWER CAP	1
E	FE1355 FEEDER STRAP (TIE WRAP) 4" <b>(820041 &amp; 820043 only)</b>	2
F	FE1560 FUZE FEEDER GRILL LOCK <b>(820041 &amp; 820043 only)</b>	1
<i>(parts specific to) 820037</i>		
G	FE1510LS 13" FUZE SLOTTED SHALLOW PAN W/HINGE & LOCK	1
H	FE1520 13" FUZE GRILL - 14 SPOKES W/ HINGE & LOCK	1
I	FE1540S FUZE ADJ COLLAR - SHALLOW PAN	1
<i>(parts specific to) 820038</i>		
G	FE1510S 13" FUZE SLOTTED STANDARD PAN W/ HINGE & LOCK	1
H	FE1520R 13" FUZE PRO GRILL - 13 SPOKE W/ HINGE & LOCK	1
I	FE1540 FUZE ADJ COLLAR - STANDARD PAN	1
<i>(parts specific to) 820039</i>		
G	FE1510LS 13" FUZE SLOTTED SHALLOW PAN W/HINGE & LOCK	1
H	FE1520R 13" FUZE PRO GRILL - 13 SPOKE W/ HINGE & LOCK	1
I	FE1540S FUZE ADJ COLLAR - SHALLOW PAN	1
<i>(parts specific to) 820040</i>		
G	FE1610S 14" FUZE SLOTTED STANDARD PAN W/ HINGE & LOCK	1
H	FE1620R 14" FUZE PRO GRILL - 14 SPOKE W/ HINGE & LOCK	1
I	FE1540 FUZE ADJ COLLAR - STANDARD PAN	1
<i>(parts specific to) 820041</i>		
G	FE1610LS 14" FUZE SLOTTED SHALLOW PAN	1
H	FE1620R 14" FUZE PRO GRILL - 14 SPOKE W/ HINGE & LOCK	1
I	FE1540S FUZE ADJ COLLAR - SHALLOW PAN	1
<i>(parts specific to) 820042</i>		
G	FE1610S 14" FUZE SLOTTED STANDARD PAN W/ HINGE & LOCK	1
H	FE1820R 14" FUZE PRO GRILL - 5 SPOKE W/ HINGE & LOCK	1
I	FE1540 FUZE ADJ COLLAR - STANDARD PAN	1
<i>(parts specific to) 820043</i>		
G	FE1610LS 14" FUZE SLOTTED SHALLOW PAN	1
H	FE1820R 14" FUZE PRO GRILL - 5 SPOKE W/ HINGE & LOCK	1
I	FE1540S FUZE ADJ COLLAR - SHALLOW PAN	1



PART #	DESCRIPTION - SUB ASSEMBLY	QTY
<b>FUZE CTRL PAN, CLAMPING W/MECH SWITCH 820046</b>		
451008	1-3/4" SS TUBE CLAMP	2
820158	FUZE NON-SWING BRACKET	1